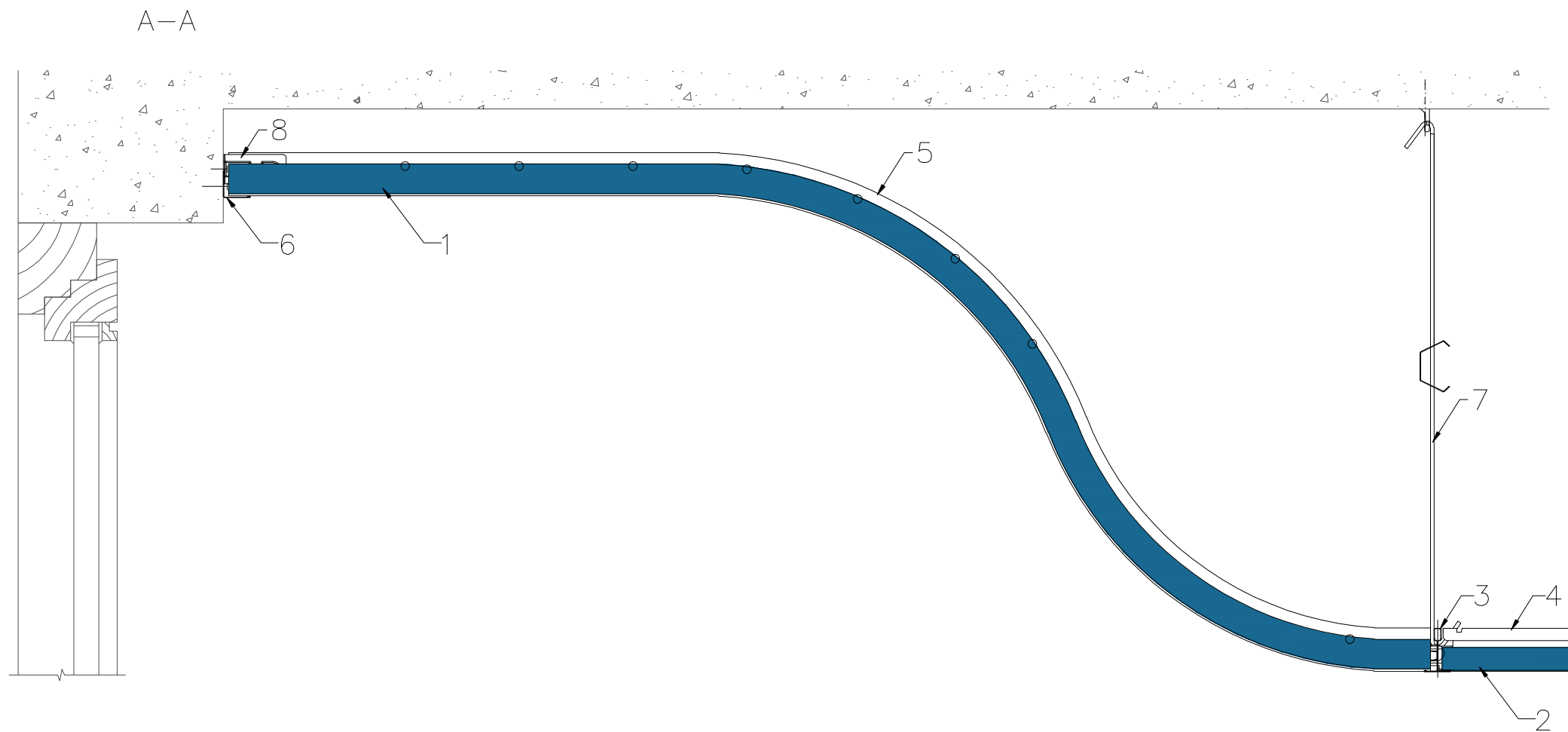


1. Tile ROCKFON FLECTOLINE
2. Tile ROCKFON, edge A
3. Flectoline profil
4. Mainrunner T24 C/H38 3600 white
5. Cross Tee T24 C38 1200 white
6. Wall Angle 24/24 3050 white
7. Adjustable hanger
8. Angle bracket for coff frame



All screws and other fastenings shown are indicative and illustrative only.
Specific fasteners should be chosen dependent on substrates and materials being used.

Information:
Light from windows – Flectoline Ø400mm S-line, level shift 400mm

Date:
11.04.2014

Drawing Type:

Drawing No.:
3.1.2.Light-incidence

Drawn by:

Scale:
1:5

Contact Information:

We kindly draw your attention to the fact that the above drawings should be considered as guidelines and therefore are without responsibility on the part of Rockfon.

Rockfon[®]