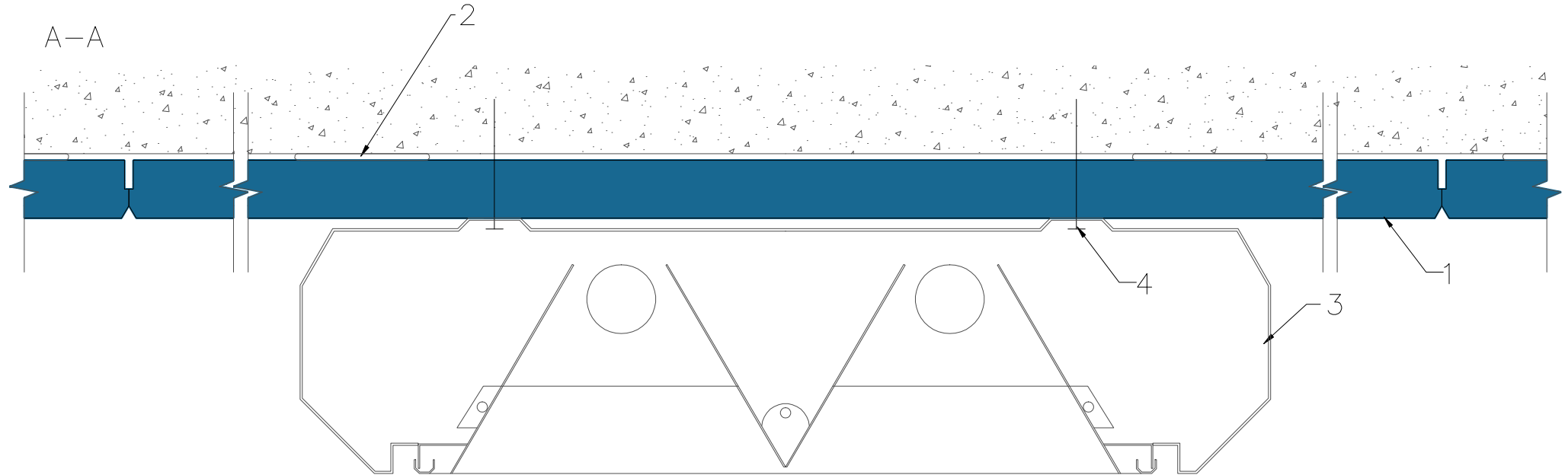


A-A



1. Tile ROCKFON, edge B
2. Adhesive
3. Light armature
4. Screw

Fasten light by direct fixing through tile to soffit.

All screws and other fastenings shown are indicative and illustrative only. Specific fasteners should be chosen dependent on substrates and materials being used.

<p>Information:</p> <p>Light installation – surface mounted direct fixed to soffit, System B, C and COSMOS</p> <p>We kindly draw your attention to the fact that the above drawings should be considered as guidelines and therefore are without responsibility on the part of Rockfon.</p>	<p>Date:</p> <p>07.04.2014</p>	<p>Drawing Type:</p>	
	<p>Drawing No.:</p> <p>4.1.3.Lighting-ventilation-etc.</p>	<p>Drawn by:</p>	<p>Scale:</p> <p>1:2</p>
	<p>Contact Information:</p>		

