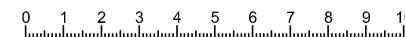
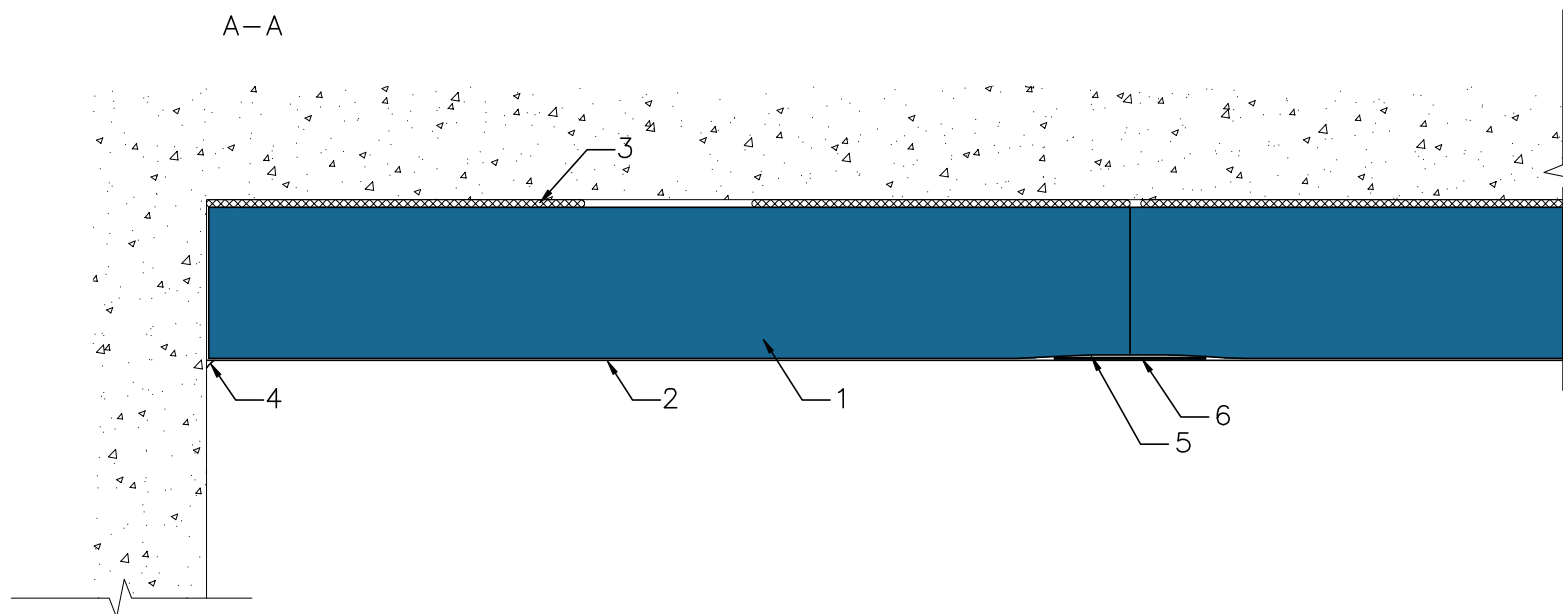



1. Rockfon® Mono® Acoustic Direct
2. Rockfon® Mono® Acoustic Render
3. Rockfon® SwiftFix™
4. Joint Sealant
5. Rockfon® Mono® Acoustic Filler
6. Rockfon® Mono® Acoustic Tape



All screws and other fastenings shown are indicative and illustrative only.
Specific fasteners should be chosen dependent on substrates and materials being used.

Information: Rockfon® Mono® Acoustic	Date: 09.11.17	Drawing Type:	
Drawing name: Wall connection, Direct	Drawing No.: 8.2.3	Drawn by:	Scale: 1 : 2
We kindly draw your attention to the fact that the above drawings should be considered as guidelines and therefore are without responsibility on the part of Rockfon.	Contact information:		

**Rockfon®**