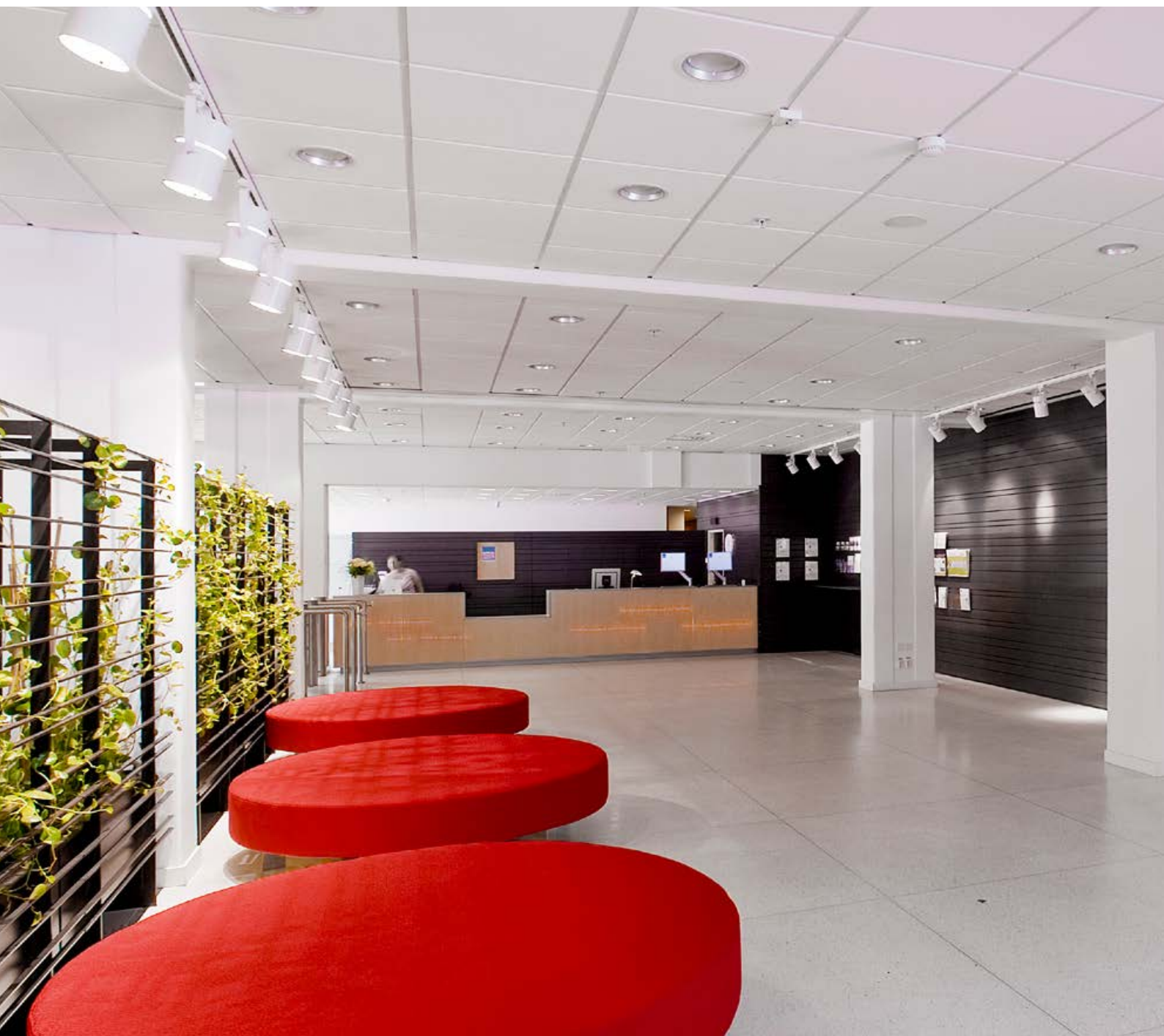


DATASHEET

Rockfon® Koral™



Sounds Beautiful

Rockfon® Koral™








- Attractive white, micro-textured surface for various applications
- Highest Class A sound absorption and highest fire safety (Class A1)
- Available in semi-concealed and visible grid options
- Easy to clean with a vacuum or a damp cloth

Product Description

- Stone wool tile
- Visible side: micro-textured white painted fleece
- Rear side: back fleece
- Painted edges

Application Areas

- Office
- Industry
- Education
- Leisure
- Retail

Edge detail	Module size (mm)	Weight (kg/m ²)	MS / MS easy access (mm)	Recommended installation System	Recycled content	Cradle to Cradle Certified®	A1-A3 Production stage impact (kg CO ₂ eq/m ²)*	A1-C4 Full life cycle impact (kg CO ₂ eq/m ²)*
 A15	600 x 600 x 15	2.0	50 / 100	Rockfon® System T15 A™	30%		2.51	3
			50 / 100	Rockfon® System T15 A, E ECR™				
			50 / 100	Rockfon® System T15 A™				
	600 x 600 x 20	2.3	50 / 100	Rockfon® System T15 A, E ECR™	32%		2.82	3.47
 A24	600 x 600 x 15	2.0	50 / 100	Rockfon® System T24 A™	30%		2.51	3
			50 / 100	Rockfon® System XL T24 A™				
			50 / 100	Rockfon® System T24 A, E ECR™				
			50 / 100	Rockfon® System T24 A™				
	1200 x 600 x 15		50 / 100	Rockfon® System T24 A, E ECR™				
		2.3	50 / 100	Rockfon® System T24 A™	32%		2.82	3.47
	600 x 600 x 20		50 / 100	Rockfon® System XL T24 A™				
			50 / 100	Rockfon® System T24 A, E ECR™				
	1200 x 600 x 20		50 / 100	Rockfon® System T24 A™				
		50 / 100	Rockfon® System T24 A, E ECR™					
 E15	600 x 600 x 15	2.2	50 / 100	Rockfon® System T15 E™	33%		2.46	3.09
			50 / 100	Rockfon® System T15 A, E ECR™				
			50 / 100	Rockfon® System T15 E™				
	1200 x 600 x 15			50 / 100	Rockfon® System T15 A, E ECR™			
	600 x 600 x 20		60 / 100	Rockfon® System T15 E™	34%		2.82	3.47
 E24	600 x 600 x 15	2.2	58 / 100	Rockfon® System T24 E™	33%		2.46	3.09
			58 / 100	Rockfon® System XL T24 E™				
			58 / 100	Rockfon® System T24 A, E ECR™				
			58 / 100	Rockfon® System T24 E™				
			58 / 100	Rockfon® System T24 A, E ECR™				
	1200 x 600 x 15							
	600 x 600 x 20		60 / 100	Rockfon® System T24 E™	34%		2.82	3.47

MS = Minimum Suspension

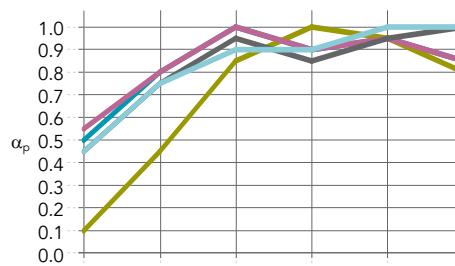
* For full environmental impact disclosure, see our product EPDs available on rockfon.link/uk-epd. Due to differences in calculation methods and scenario assumptions, environmental impact values are generally not directly comparable between manufacturers.



Performance



Sound absorption
 α_w : up to 0.95 (Class A)



Edge /
 Thickness (mm) /
 Suspension (incl. tile - mm)

	125 Hz	250 Hz	500 Hz	1000 Hz	2000 Hz	4000 Hz	α_w	Absorption class	NRC
A: 15 / 200	0.50	0.80	1.00	0.90	0.95	0.85	0.95	A	0.90
A: 15 / 50	0.10	0.45	0.85	1.00	0.95	0.80	0.75	C	0.80
A: 20 / 200	0.55	0.80	1.00	0.90	0.95	0.85	0.95	A	0.90
E: 15 / 200	0.45	0.75	0.95	0.85	0.95	1.00	0.95	A	0.90
E: 20 / 200	0.45	0.75	0.90	0.90	1.00	1.00	0.95	A	0.90



Reaction to fire
 A1



Fire protection
 The fire resistant properties of stone wool ensure Rockfon ceiling tiles provide fire protection in construction. The fire protection properties of Rockfon ceilings have been tested and classified in accordance with European norm EN 13501-2 and/or national norms depending on requirements in national building codes. Some sizes and edge details of Rockfon Koral can be used with various Chicago Metallic grids and Rockfon systems to create a 30 and/or 60 minutes fire protecting ceiling in accordance with BS 476 Part 21 and Part 23. They can also be used to create a 30 minutes fire protecting membrane ceiling (integrity only) in accordance with BS 476 Part 22.



Light reflection
 86%



Humidity and sag resistance
 Up to 100% RH.
 No visible deflection in high humidity
 C/0N



Cleaning
 - Vacuum
 - Damp cloth



Hygiene
 Stone wool provides no sustenance to microorganisms



Recyclability
 Fully recyclable stone wool



Indoor environment
 Rockfon ceiling products are classified in Class E1 in accordance with EN 13964 (EN 717-1). Rockfon ceiling products have a very low release of VOCs. A selection of Rockfon products have achieved the following performance levels and labels in indoor air emissions:



Material Health
 All materials used in Rockfon products are screened against the technical checklist A20 and the list of substances restricted under REACH and do not contain substances of very high concern (SVHC). Rockfon stone wool fibres comply with safe fibre EU regulation and hold a EUCEB certification.

Sounds Beautiful

