

DATASHEET

Rockfon Contour®



Sounds Beautiful

Rockfon Contour®


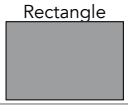

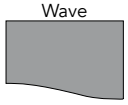
- Aesthetically attractive, frameless acoustic baffles
- Very quick and easy to install
- Design a statement ceiling by using wave shapes in different dimensions
- Ideally suited for enhancing acoustics in thermal mass areas or where frequent and unhindered access to services is required
- Use alone or in combination with an existing acoustic ceiling to enhance sound absorption

Product Description

- Stone wool baffle
- Surface: smooth, matt white fleece
- Edge: matt white structured paint
- 4 rectangular shapes and 3 modular wave shapes
- Suspension points integrated in the baffle

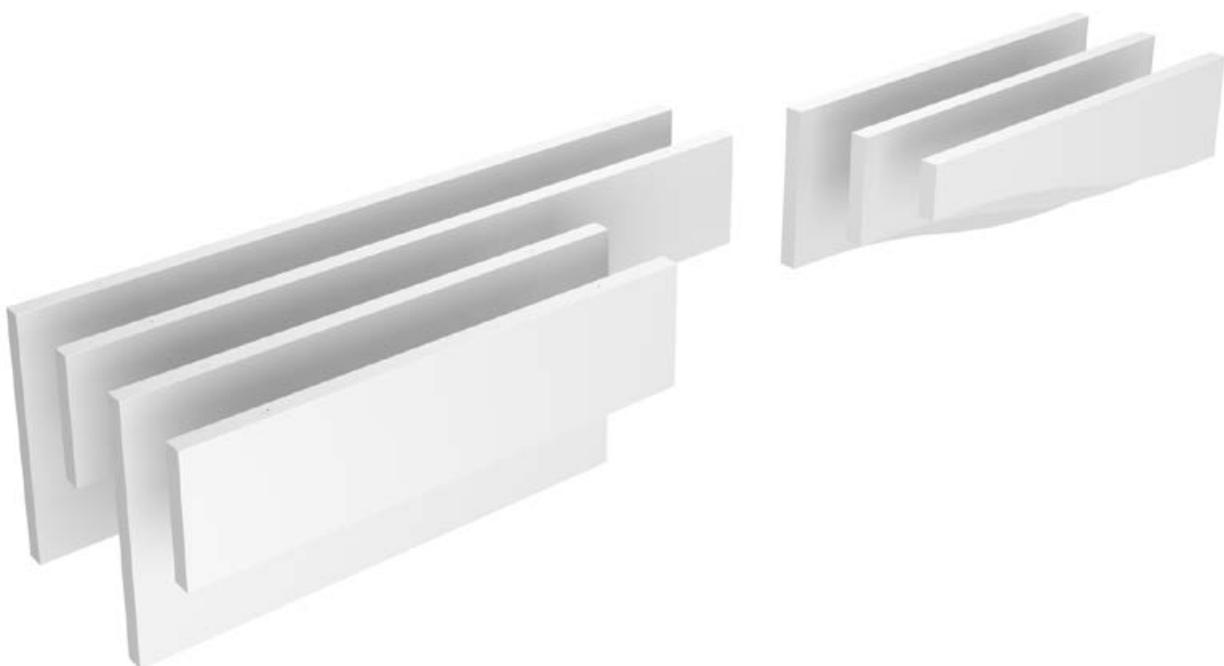
Application Areas

- Education
- Retail
- Healthcare
- Industry
- Office
- Leisure

Edge detail	Shapes	Module size (mm)	Weight (kg/unit)	Recommended installation System	Recycled content	Cradle to Cradle Certified®	A1-A3 Production stage impact (kg CO ₂ eq/m ²)*	A1-C4 Full life cycle impact (kg CO ₂ eq/m ²)*
	Rectangle 	1200 x 300 x 50	2.2	Rockfon® System Contour Baffle™	38%		6.08	7.97
		1800 x 300 x 50	3.3	Rockfon® System Contour Baffle™				
		1200 x 600 x 50	4.4	Rockfon® System Contour Baffle™				
		1800 x 600 x 50	6.5	Rockfon® System Contour Baffle™				
	Wave 	1200 x 150-300 x 50	1.7	Rockfon® System Contour Baffle™				
		1200 x 300-450 x 50	2.7	Rockfon® System Contour Baffle™				
		1200 x 450-600 x 50	3.8	Rockfon® System Contour Baffle™				

Contact us for special sizes, lead times and minimum quantities.

* For full environmental impact disclosure, see our product EPDs available on rockfon.link/uk-epd. Due to differences in calculation methods and scenario assumptions, environmental impact values are generally not directly comparable between manufacturers.





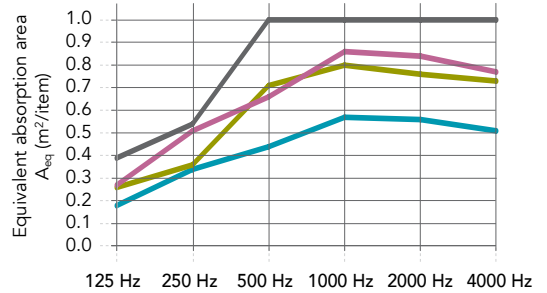
Performance



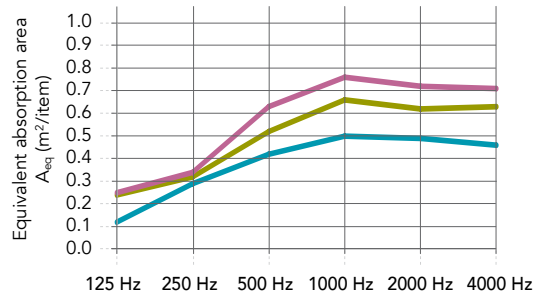
Sound absorption

A_{eq} (m²/item)

*) Values obtained on the basis of theoretical analysis. More data available on A_{eq} and α_w values. For more information, contact your local sales support



	125 Hz	250 Hz	500 Hz	1000 Hz	2000 Hz	4000 Hz
Rectangular 1200x300x50 mm: single baffle (1 baffle/m ² ; row distance: 83 cm)	0.18	0.34	0.44	0.57	0.56	0.51
Rectangular 1200x600x50 mm: single baffle (1 baffle/m ² ; row distance: 83 cm)	0.26	0.36	0.71	0.80	0.76	0.73
Rectangular 1800x300x50 mm: single baffle (0.7 baffle/m ² ; row distance: 83 cm)*	0.27	0.51	0.66	0.86	0.84	0.77
Rectangular 1800x600x50 mm: single baffle (0.7 baffle/m ² ; row distance: 83 cm)*	0.39	0.54	1.07	1.20	1.14	1.09



	125 Hz	250 Hz	500 Hz	1000 Hz	2000 Hz	4000 Hz
Wave 1200x150/300x50 mm: single baffle (1 baffle/m ² ; row distance: 83 cm)	0.12	0.29	0.42	0.50	0.49	0.46
Wave 1200x300/450x50 mm: single baffle (1 baffle/m ² ; row distance: 83 cm)	0.24	0.32	0.52	0.66	0.62	0.63
Wave 1200x450/600x50 mm: single baffle (1 baffle/m ² ; row distance: 83 cm)	0.25	0.34	0.63	0.76	0.72	0.71



Reaction to fire

A1



Light reflection

79%



Humidity and sag resistance

Up to 100% RH
Rockfon Contour is not suitable for use in swimming pools or outdoors.
For more information, please contact Rockfon.



Cleaning

- Vacuum



Hygiene

Stone wool provides no sustenance to microorganisms



Recyclability

Fully recyclable stone wool



Indoor environment

Rockfon ceiling products are classified in Class E1 in accordance with EN 13964 (EN 717-1). Rockfon ceiling products have a very low release of VOCs. A selection of Rockfon products have achieved the following performance levels and labels in indoor air emissions:



Material Health

All materials used in Rockfon products are screened against the technical checklist A20 and the list of substances restricted under REACH and do not contain substances of very high concern (SVHC). Rockfon stone wool fibres comply with safe fibre EU regulation and hold a EUCEB certification.

Sounds Beautiful

