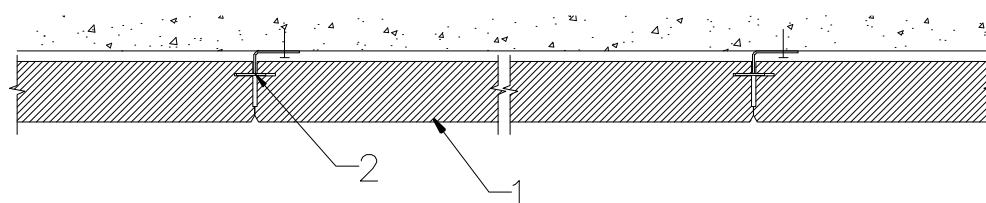
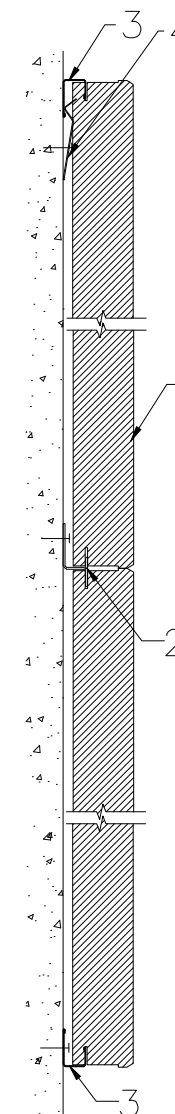


A-A



B-B



1. Tile ROCKFON SONAR ACTIVITY C edge
2. G hook
3. C channel ref:MUS8W
4. SMF Clip

All screws and other fastenings shown are indicative and illustrative only.
Specific fasteners should be chosen dependent on substrates and materials being used.

Information:
Acoustic regulation without a complete suspended ceiling – wall absorber Sonar Activity C edge installed using G hooks and C channel

We kindly draw your attention to the fact that the above drawings should be considered as guidelines and therefore are without responsibility on the part of Rockfon Limited.

Date:	Drawing Type:	
Drawing No.:	Drawn by:	Scale: 1:5
Contact Information:		

Rockfon
ACTIVATE YOUR CEILING

Tel. +44 (0) 208 222 7457