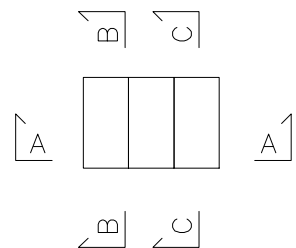
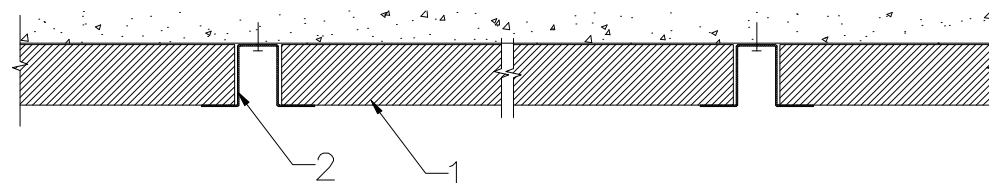


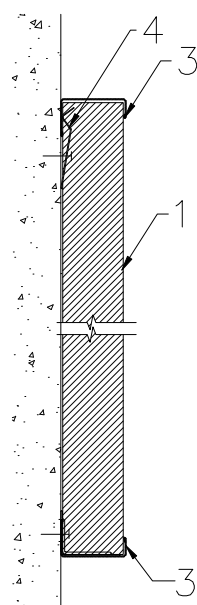
1. Tile ROCKFON SAMSON
2. Hat profile
3. J channel ref:6961-0105
4. SMF clip



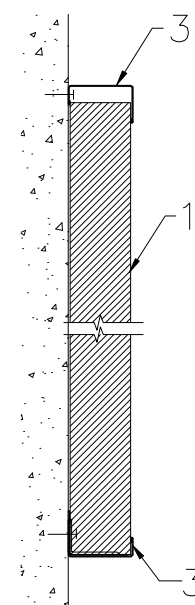
A-A



B-B ex.1



C-C ex. 2



All screws and other fastenings shown are indicative and illustrative only. Specific fasteners should be chosen dependent on substrates and materials being used.

**Information:**  
Acoustic regulation without a complete suspended ceiling – wall absorber Samson, hat and J channel

We kindly draw your attention to the fact that the above drawings should be considered as guidelines and therefore are without responsibility on the part of Rockfon Limited.

Date:	Drawing Type:	
Drawing No.:	Drawn by:	Scale: 1:5
Contact Information:		

**Rockfon**  
ACTIVATE YOUR CEILING

Tel. +44 (0) 208 222 7457