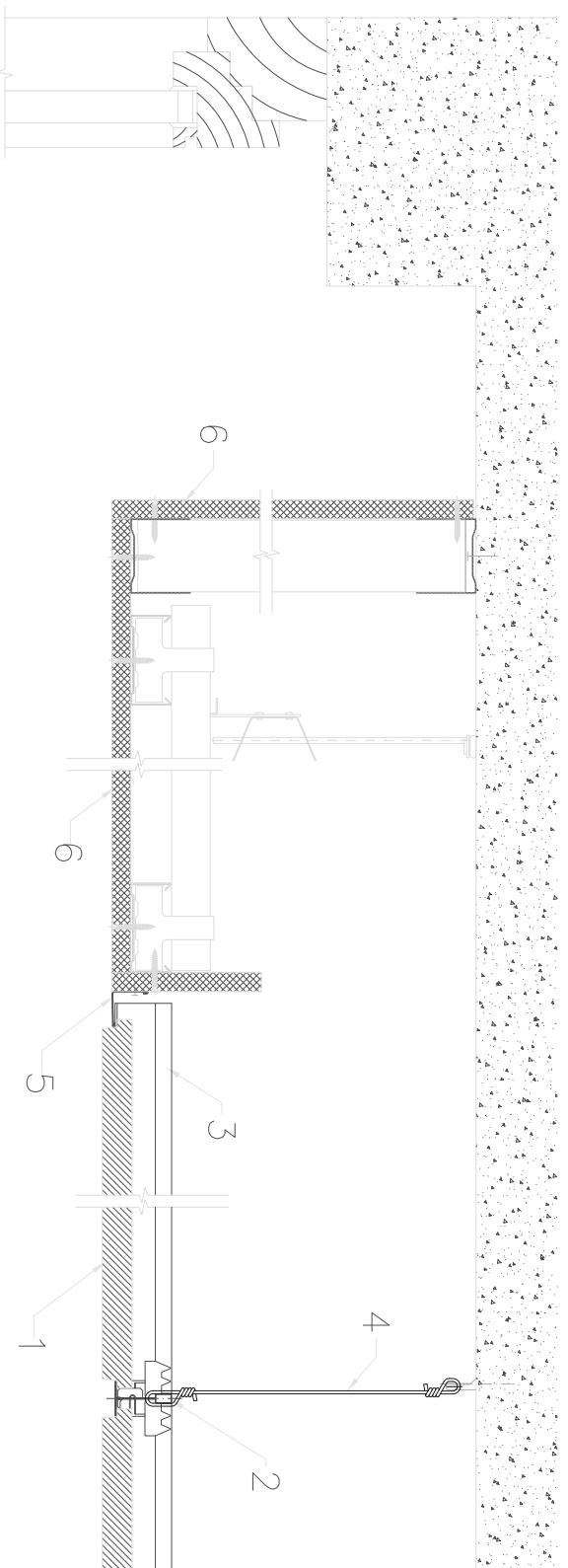


A-A



1. Tile ROCKFON with E edge
2. Main runner T24
3. Cross tee T24 1200mm
4. Wire hanger
5. Perimeter angle trim
6. Gypsum board

All screws and other fastenings shown are indicative and illustrative only.  
Specific fasteners should be chosen dependent on substrates and materials being used.

**Information:**  
Natural light from windows – gypsum perimeter finish vertical – E edge tiles

**Date:**

**Drawing Type:**

**Drawing No.:**

**Drawn by:**

**Scale:**  
1:5

**Contact Information:**

We kindly draw your attention to the fact that the above drawings should be considered as guidelines and therefore are without responsibility on the part of Rockfon Limited.