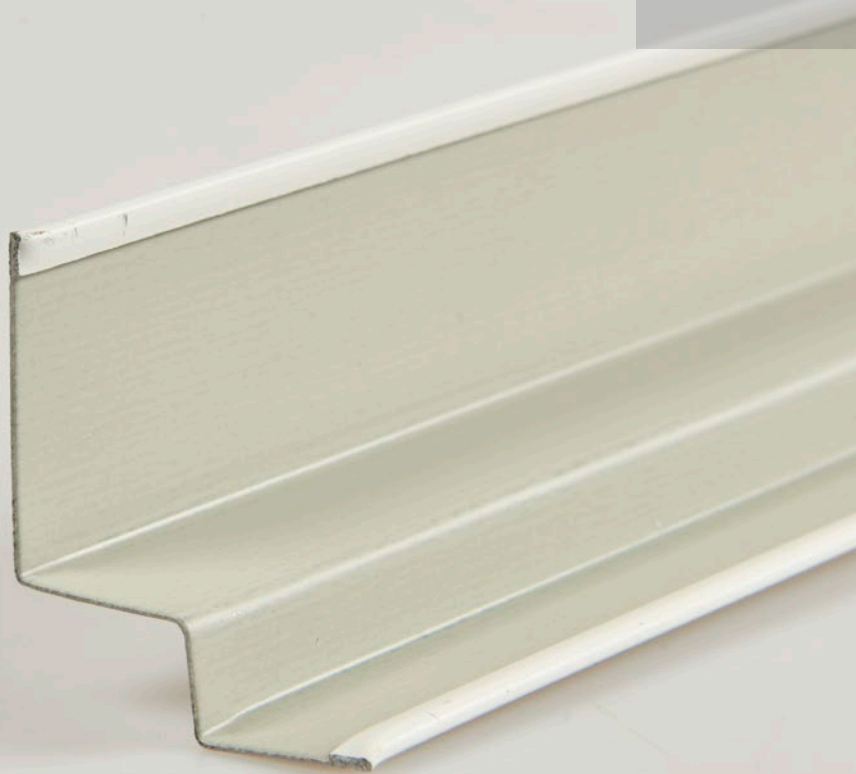
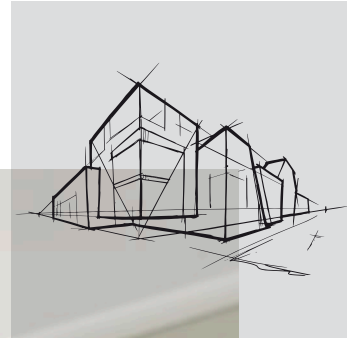


# Chicago Metallic<sup>™</sup> W Profiles








Datasheet



# Chicago Metallic™ W Profiles

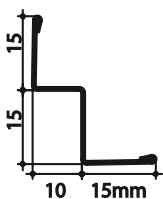
- A range of W profiles (shadow moulding wall angles) for various applications
- Visible flanges from 15 - 20mm to fit with different T-grids
- Designed for various Rockfon tiles (E, X, M & D-edge)
- Specific corner caps available

## Assortment

Product group		Component description	Length (mm)	Colour	Pcs per pack	Lm per pack	Kg per pack	Carton per pallet	Kg per pallet
Wall angle options									
W10x15		Shadow angle 15 x 15 x 10 x 15 x 3050mm	3050	001, 04, 11, 88, 901	30	91.5	19.9	60	1191
W8x12		Shadow angle 15 x 12 x 8 x 15 x 3050mm	3050	001, 04, 11, 88, 901	30	91.5	17.9	60	1075
W20		Shadow moulding wall angle 20 x 20 x 20 x 20 x 3050mm	3050	001	20	61	27.8	60	1669
Accessories									
CC W8x12 OUT		Outside stepped corner for W Profile 15x8x12x15 mm		001	50		1.1	390	254
CC W8x12 IN		Inside stepped corner for W Profile 15x8x12x15 mm		001	50		1.3	220	143
CC 15 OUT		Outside flat corner for W Profile flange 15 mm		001	50		0.85	1350	203
CC 15 IN		Inside flat corner for W Profile flange 15 mm		001	50		0.8	1350	203

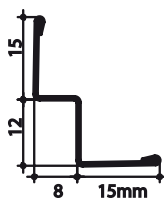
## Product description

W10x15



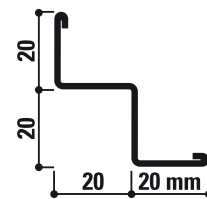
- Shadow angle with a 15mm face and a 15mm mounting surface.
  - Suitable for semi-concealed and concealed tiles of 10mm and 15mm (E10, X & M-edge).
  - Marks printed inside the profile to indicate fixing centres.
  - Rockfon tile labelling on the inside.
- Material thickness:** 0.5mm

W8x12



- Shadow angle with a 15mm face and a 15mm mounting surface.
  - Suitable for semi-concealed and concealed tiles of 12mm and 8mm (E8 & D-edge).
  - Marks printed inside the profile to indicate fixing centres.
  - Rockfon tile labelling on the inside.
- Material thickness:** 0.5mm

W20



- Reinforced shadow angle with a 20mm face.
  - Used in self-supporting corridor constructions.
  - Also ideal for the fixation of light removable partitions thanks to the possibility for larger suspension distances.
- Material thickness:** 0.7mm

## Performance



Reaction to fire

A1



Corrosion Resistance

B



Environment

Fully recyclable

# Understanding the performance of Chicago Metallic™ grids and accessories



## Reaction to fire

Reaction to fire is classified in accordance with EN 13501-1. Chicago Metallic steel grids and accessories are non-combustible.



## Fire resistance

A range of Chicago Metallic steel grids are tested in combination with different Rockfon tiles and are classified in accordance with European norm EN 13501-2 and/or national norms.



## Colours

Chicago Metallic grids are available in various colours from the RAL and NCS systems, which are measured following the ISO 7724-2 and ISO 7724-3 standards. The actual colours may deviate slightly from the RAL and NCS references. Chicago Metallic grids are available in a variety of finishes from matt to high gloss, with a respective average of < 5, 15 and 50 units at a 60° angle. The matt finishing is measured at an angle of 85°. See the colour legend for their average values. The gloss unit is measured in accordance with EN13523 part 2.



## Corrosion resistance

Chicago Metallic products produced from hot dip galvanised steel following the Sendzimir process comply with the corrosion classes of the product standard EN 13964 (A, B, C, D). The standard systems in class B are protected with 100 g/m<sup>2</sup> zinc evenly applied on both sides. The enhanced corrosion resistance (ECR) systems and accessories in class C or D have respectively a layer of 100 g/m<sup>2</sup> and 275 g/m<sup>2</sup> zinc evenly applied on both sides and are protected with an additional layer of 20 micron paint per side.



## Load bearing performance

The load bearing performance (max. kg/m<sup>2</sup> load applicable to the grid system without exceeding the allowable deflection of the individual components) is tested in accordance with the EN 13964 standard. The accumulative value of the system deflection, shown on the data sheets, does not exceed the max. deflection as given in class 1 of the standard. Special project configurations deviating from the standard module sizes mentioned in the data sheets must be calculated by Rockfon technical services.



## Cleaning

All Chicago Metallic grids can be cleaned with water and a mild detergent in combination with a melamine foam sponge or microfiber cloth.

## Colour legend

For colour availability of individual components, please check the assortment table above

White 001 RAL 9003	White 901 RAL 9010	White 01 White 916	Matt White 11 RAL 9003	L value: 93 Gloss: 2 at both a 60° and 85° angle
Platinum 54 RAL 7035	Alugrey 04 RAL 9006	Galvanised 00 Galvanised 69	Matt Black 88 RAL 9004	Gloss: 4.5 at 60° angle and 11.5 at 85° angle
Brushed Alu 534	High Gloss Chrome 14	Carrara 57	High Gloss Brass 16	
White 001 / White 001 (8WW) RAL 9003 / RAL 9003	Black 08 / Black 08 (8BB) RAL 9005 / RAL 9005	White 001 / Black 08 (8WB) RAL 9003 / RAL 9005	Alugrey 04 / Black 08 (8GB) RAL 9006 / RAL 9005	

# Rockfon Color-all®

Mustard - 51 NCS S 2050-Y10R	Sand - 30 NCS S 2020-Y20R	Stucco - 20 NCS S 1505-Y30R			
Scarlet - 71 NCS S 6030-Y80R	Coral - 76 NCS S 3040-Y90R	Seashell - 75 NCS S 1510-Y60R	Petal - 74 NCS S 1005-Y60R		
Seaweed - 34 NCS S 8005-G20Y	Eucalyptus - 32 NCS S 6020-B90G	Sage - 31 NCS S 3010-G10Y	Mint - 12 NCS S 1005-G10Y		
Space - 49 NCS S 7020-B	Storm - 48 NCS S 6020-R90B	Azure - 47 NCS S 3020-B	Fresh - 42 NCS S 2010-B10G		
Earth - 25 NCS S 5010-Y50R	Clay - 26 NCS S 5005-G80Y	Linen - 22 NCS S 4005-Y50R	Sandalwood - 13 NCS S 2010-Y60R	Chalk - 21 NCS S 2005-Y40R	
Ebony - 28 NCS S 8505-Y80R	Cork - 24 NCS S 4010-Y30R	Hemp - 23 NCS S 3005-Y20R			
Iron - 18 NCS S 7502-B	Concrete - 06 NCS S 6000-N	Mastic - 17 NCS S 4000-N	Zinc - 05 NCS S 4005-R50B	Mercury - 62 NCS S 2502-B	
Charcoal - 09 NCS S 8500-N	Anthracite - 08 NCS S 7010-R90B	Gravel - 03 NCS S 3502-B	Plaster - 02 NCS S 2005-R80B	Stone - 01 NCS S 2000-N	Moon - 10 NCS S 1005-R80B

NCS codes are closest colour match. The actual colour of the Rockfon Color-all® grid may deviate slightly from printed colours due to the texture of the surface. Samples are available upon request.

Rockfon® is a registered trademark  
of the ROCKWOOL Group.

 [linkedin.com/company/Rockfon-as](https://www.linkedin.com/company/Rockfon-as)

 [pinterest.com/Rockfon](https://www.pinterest.com/Rockfon)

 [youtube.com/RockfonOfficial](https://www.youtube.com/RockfonOfficial)

 [facebook.com/RockfonOfficial](https://www.facebook.com/RockfonOfficial)

 [instagram.com/Rockfon\\_Official](https://www.instagram.com/Rockfon_Official)

## Sounds Beautiful

03/2022 | All colour codes mentioned are based on the NCS - Natural Colour System® property of and used on license from NCS Colour AB, Stockholm 2012 or the RAL colour standard. Subject to alterations in range and product technology without prior notice. Rockfon accepts no responsibility for printing errors.



**Rockfon**  
ROCKWOOL Limited T/A Rockfon  
14th Floor, Chiswick Tower, 389 Chiswick High Road,  
London W4 4AL  
Tel: +44 (0) 208 222 7457  
[www.rockfon.co.uk](http://www.rockfon.co.uk)