

DATASHEET

# **Chicago Metallic™ T24 Hook D850**

## **ECR Class D**

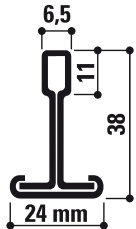


**Sounds Beautiful**

# Chicago Metallic™ T24 Hook D850 ECR Class D

- 24mm grid with Enhanced Corrosion Resistant finish
- Extra galvanised steel with double sided painting suitable for use in Class D environments set out in EN13964
- The system includes accessories and wall angles also with Class D protection
- For use in harsh, Class D environments, eg. swimming pool areas, kitchens etc.
- The system is compatible with the 75 mm high system in class D

## Cross-section



## Compatible tiles

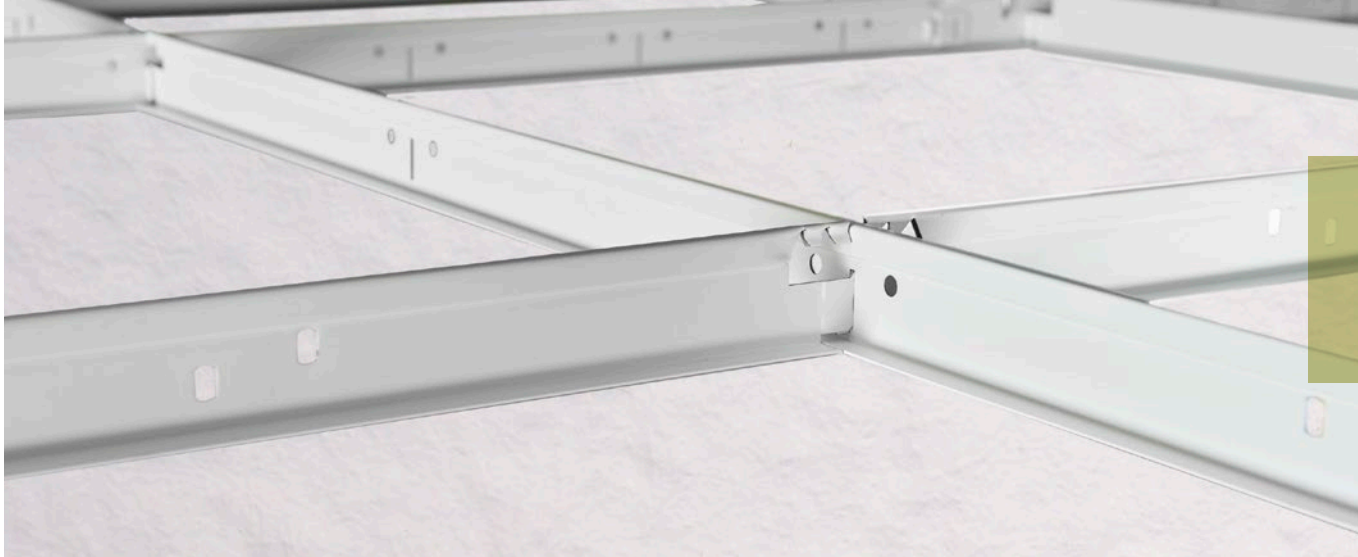


## Coupling

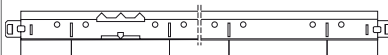
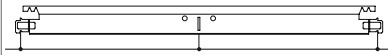
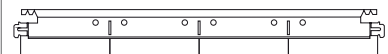


## Assortment

| Product group             |  | Component description  | Height (mm) | Length (mm) | Colour | Pcs per pack | Lm per pack | Kg per pack | Carton per pallet | Kg per pallet |
|---------------------------|--|--|-------------|-------------|--------|--------------|-------------|-------------|-------------------|---------------|
| <b>Main runner</b>        |  |  |             |             |        |              |             |             |                   |               |
| T24 D MR HOOK             |  | Main runner T24 Hook ECR Class D   | 38          | 3600        | 001    | 25           | 90          | 38.8        | 50                | 1942          |
| <b>Cross tee</b>          |  |  |             |             |        |              |             |             |                   |               |
| T24 D CT HOOK             |  | Cross tee T24 Hook ECR Class D   | 38          | 600         | 001    | 75           | 45          | 15.7        | 70                | 1098          |
| T24 D CT HOOK             |  |  | 38          | 1200        | 001    | 50           | 60          | 25.7        | 72                | 1850          |
| <b>Wall angle options</b> |  |  |             |             |        |              |             |             |                   |               |
| L24x24 D                  |  | ECR Class D Perimeter trim / Hanger 24 x 24 x 3050mm   |             | 3050        | 001    | 40           | 122         | 27          | 60                | 1620          |
| <b>Accessories</b>        |  |  |             |             |        |              |             |             |                   |               |
| FH B D                    |  | Special hanger bent / ECR class D  | 57.5        |             |        | 100          |             | 1.5         |                   |               |
| CAP D M6                  |  | Plastic protective cap M6 / ECR class D  |             |             |        | 100          |             | 0.165       |                   |               |
| TR D M6                   |  | Threaded rod M6 / ECR class D / L=1000mm   |             | 1000        |        | 100          |             | 16.7        |                   |               |
| NUT D M6                  |  | Nut M6 / ECR class D   |             |             |        | 100          |             | 0.2         |                   |               |
| HDC 1                     |  | Plastic hold down clip for tile thickness 15-20 mm (A edge), 15-30 mm (E edge), 20-25 mm (X, M, Z edge), 20-30 mm (D edge) |             |             |        | 100          |             | 1.34        | 48                | 80            |
| NH D 85                   |  | Upper part nonius hanger / bent / ECR class D  | 85          |             |        | 50           |             | 1.4         |                   |               |
| NH D CLIP                 |  | Intersection clip for nonius / ECR class D   |             |             |        | 100          |             | 0.7         |                   |               |
| NH D T                    |  | Lower part nonius hanger for T24 x 38mm profiles / ECR class D   | 190         |             |        | 50           |             | 2.2         |                   |               |



## Position of slots and suspension holes

| Product group | Component description            | Height (mm) | Length (mm) | Slots | Distance between slots (mm)   |
|---------------|----------------------------------|-------------|-------------|-------|---|
| T24 D MR HOOK | Main runner T24 Hook ECR Class D | 38          | 3600        | 24    | <br>75 / 150 / 22 x 150 / 75 |
| T24 D CT HOOK | Cross tee T24 Hook ECR Class D   | 38          | 600         | 1     | <br>300 / 300                |
| T24 D CT HOOK |                                  | 38          | 1200        | 3     | <br>300 / 300 / 300 / 300   |

## Performance



### Load bearing capacity

| Kg/m <sup>2</sup>    |                  |                    |        |
|----------------------|------------------|--------------------|--------|
| Hanger distance (mm) | Module size (mm) | Maximum deflection |        |
|                      |                  | 2.5 mm             | 4.0 mm |
| 1200                 | 600 x 600        | 10.9               | 18.2   |
| 1200                 | 1200 x 600       | 12.1               | 19.8   |



### Reaction to fire

A1



### Corrosion Resistance

D



### Environment

Fully recyclable

# Understanding the performance of Chicago Metallic™ grids and accessories



## Reaction to fire

Reaction to fire is classified in accordance with EN 13501-1. Chicago Metallic steel grids and accessories are non-combustible.



## Fire resistance

A range of Chicago Metallic steel grids are tested in combination with different Rockfon tiles and are classified in accordance with European norm EN 13501-2 and/or national norms.



## Colours

Chicago Metallic grids are available in various colours from the RAL and NCS systems, which are measured following the ISO 7724-2 and ISO 7724-3 standards. The actual colours may deviate slightly from the RAL and NCS references. Chicago Metallic grids are available in a variety of finishes from matt to high gloss, with a respective average of < 5, 15 and 50 units at a 60° angle. The matt finishing is measured at an angle of 85°. See the colour legend for their average values. The gloss unit is measured in accordance with EN13523 part 2.



## Corrosion resistance

Chicago Metallic products produced from hot dip galvanised steel following the Sendzimir process comply with the corrosion classes of the product standard EN 13964 (A, B, C, D). The standard systems in class B are protected with 100 g/m<sup>2</sup> zinc evenly applied on both sides. The enhanced corrosion resistance (ECR) systems and accessories in class C or D have respectively a layer of 100 g/m<sup>2</sup> and 275 g/m<sup>2</sup> zinc evenly applied on both sides and are protected with an additional layer of 20 micron paint per side.



## Load bearing performance

The load bearing performance (max. kg/m<sup>2</sup> load applicable to the grid system without exceeding the allowable deflection of the individual components) is tested in accordance with the EN 13964 standard. The accumulative value of the system deflection, shown on the data sheets, does not exceed the max. deflection as given in class 1 of the standard. Special project configurations deviating from the standard module sizes mentioned in the data sheets must be calculated by Rockfon technical services.



## Cleaning

All Chicago Metallic grids can be cleaned with water and a mild detergent in combination with a melamine foam sponge or microfiber cloth.

## Colour legend

For colour availability of individual components, please check the assortment table above

|  |  |   |  |   |
|--|--|---|--|---|
| White 001<br>RAL 9003                              | White 901<br>RAL 9010                            | White 01<br>White 916                             | Matt White 11<br>RAL 9003                          | L value: 93<br>Gloss: 2 at both a 60° and 85° angle |
| Platinum 54<br>RAL 7035                            | Alugrey 04<br>RAL 9006                           | Galvanised 00<br>Galvanised 69                    | Matt Black 88<br>RAL 9004                          | Gloss: 4.5 at 60° angle and 11.5 at 85° angle       |
| Brushed Alu 534                                    | High Gloss Chrome 14                             | Carrara 57  | High Gloss Brass 16                                |   |
| White 001 / White 001 (8WW)<br>RAL 9003 / RAL 9003 | Black 08 / Black 08 (8BB)<br>RAL 9005 / RAL 9005 | White 001 / Black 08 (8WB)<br>RAL 9003 / RAL 9005 | Alugrey 04 / Black 08 (8GB)<br>RAL 9006 / RAL 9005 |   |

# Rockfon Color-all®

|                                 |                                    |                                  |                                    |                               |                              |
|---------------------------------|------------------------------------|----------------------------------|------------------------------------|-------------------------------|------------------------------|
| Mustard - 51<br>NCS S 2050-Y10R | Sand - 30<br>NCS S 2020-Y20R       | Stucco - 20<br>NCS S 1505-Y30R   |                                    |                               |                              |
| Scarlet - 71<br>NCS S 6030-Y80R | Coral - 76<br>NCS S 3040-Y90R      | Seashell - 75<br>NCS S 1510-Y60R | Petal - 74<br>NCS S 1005-Y60R      |                               |                              |
| Seaweed - 34<br>NCS S 8005-G20Y | Eucalyptus - 32<br>NCS S 6020-B90G | Sage - 31<br>NCS S 3010-G10Y     | Mint - 12<br>NCS S 1005-G10Y       |                               |                              |
| Space - 49<br>NCS S 7020-B      | Storm - 48<br>NCS S 6020-R90B      | Azure - 47<br>NCS S 3020-B       | Fresh - 42<br>NCS S 2010-B10G      |                               |                              |
| Earth - 25<br>NCS S 5010-Y50R   | Clay - 26<br>NCS S 5005-G80Y       | Linen - 22<br>NCS S 4005-Y50R    | Sandalwood - 13<br>NCS S 2010-Y60R | Chalk - 21<br>NCS S 2005-Y40R |                              |
| Ebony - 28<br>NCS S 8505-Y80R   | Cork - 24<br>NCS S 4010-Y30R       | Hemp - 23<br>NCS S 3005-Y20R     |                                    |                               |                              |
| Iron - 18<br>NCS S 7502-B       | Concrete - 06<br>NCS S 6000-N      | Mastic - 17<br>NCS S 4000-N      | Zinc - 05<br>NCS S 4005-R50B       | Mercury - 62<br>NCS S 2502-B  |                              |
| Charcoal - 09<br>NCS S 8500-N   | Anthracite - 08<br>NCS S 7010-R90B | Gravel - 03<br>NCS S 3502-B      | Plaster - 02<br>NCS S 2005-R80B    | Stone - 01<br>NCS S 2000-N    | Moon - 10<br>NCS S 1005-R80B |

NCS codes are closest colour match. The actual colour of the Rockfon Color-all® grid may deviate slightly from printed colours due to the texture of the surface. Samples are available upon request.

# Sounds Beautiful

