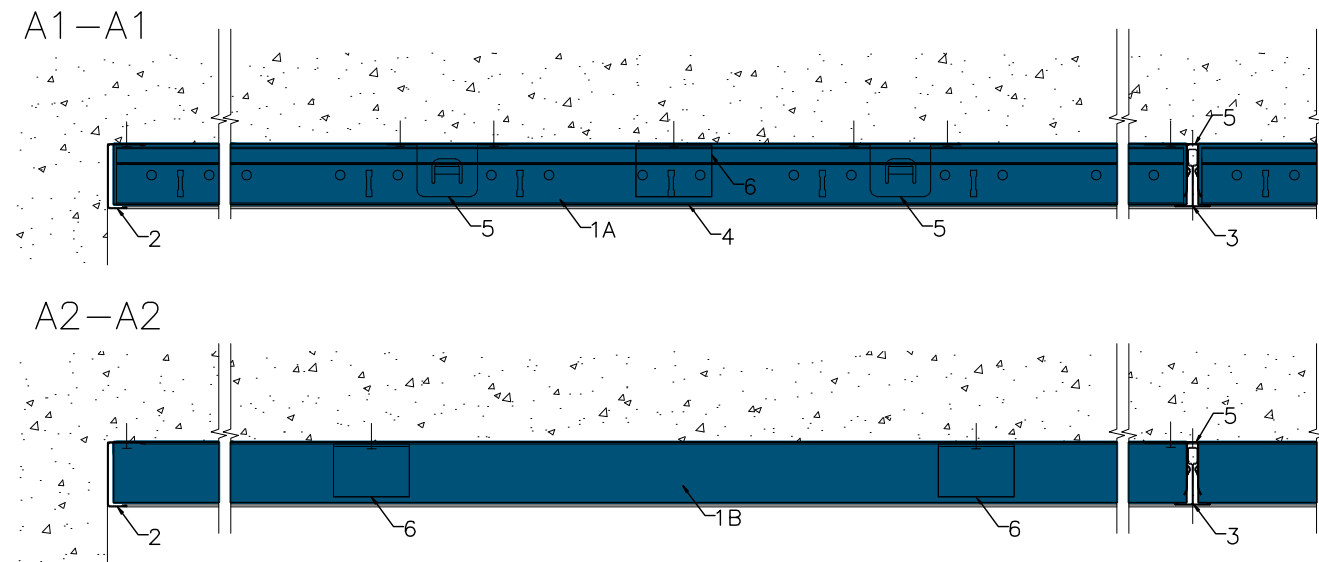


1A.	Panel VertiQ A24 2700x1200 [mm]
1B.	Panel VertiQ A24 1200X1200 [mm]
2.	Perimeter trim – 40 mm J channel 3050 mm
3.	Mainrunner T24 C/H38 3600 mm
4.	Cross Tee T24 C/H38 1188 mm (cut to size from 3600 mm)
5.	T fixing bracket
6.	Supporting bracket 15x35x50 mm

Full scale drawing is available in model space



All screws and other fastenings shown are indicative and illustrative only. Specific fasteners should be chosen dependent on substrates and materials being used.

Information:

Date:

11.01.16

Drawing Type:

Drawing No.:

30.1.4. VertiQ T24 A wall

Drawn by:

Scale:

1:5

Contact Information:

We kindly draw your attention to the fact that the above drawings should be considered as guidelines and therefore are without responsibility on the part of Rockfon.

Rockfon[®]