



INVESTOR IN PEOPLE

Holbrook House, Little Waldingfield,
Sudbury, Suffolk CO10 0TH
Tel: (01787) 247595 Fax: 01787 248420
e-mail: srl@soundresearch.co.uk

Contract: C/09/5L/20816

Page: 1 of 1

Date: 23 October 2009

Not UKAS accredited

See SRL report C/09/5L/20816/R08 for full details

The Laboratory Measurement of Random Incidence Sound Absorption generally to BS EN ISO 354:2003

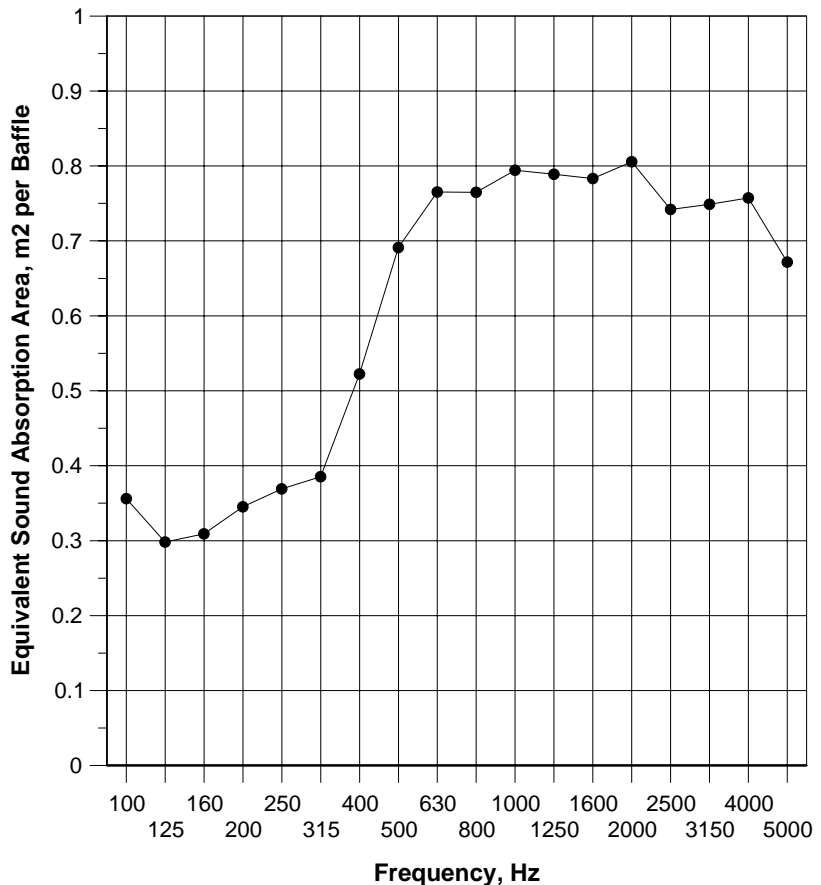
Client: Rockfon
Test Date: 18/06/2009
Empty Room: Temperature: 18.7 °C Humidity: 51 %RH Pressure: 1015 mbar
Room with Sample: Temperature: 18.7 °C Humidity: 50 %RH Pressure: 1015 mbar
Sample: Contour 1200x600x50mm - Double B edge
Description: 3 x 4.8m rows, 0.83m centres
Mounting Method: J - results presented as equivalent sound absorption area of the total array, and per 1200mm long baffle in that array

Chamber Volume: 300 m3

Equivalent Sound Absorption Area, m2 per Baffle

Test 21				
Freq Hz	T1 sec	T2 sec	Equivalent Sound Absorption Area, m2	
			Array	/ baffle
50*	4.39	3.84	1.6	0.13
63*	4.32	3.89	1.2	0.10
80*	4.37	3.29	3.6	0.30
100	5.76	3.82	4.3	0.36
125	6.30	4.30	3.6	0.30
160	6.75	4.45	3.7	0.31
200	7.13	4.43	4.1	0.35
250	7.76	4.54	4.4	0.37
315	7.29	4.30	4.6	0.39
400	6.36	3.49	6.3	0.52
500	5.41	2.81	8.3	0.69
630	5.16	2.61	9.2	0.77
800	5.48	2.69	9.2	0.76
1000	5.94	2.74	9.5	0.79
1250	5.76	2.71	9.5	0.79
1600	5.25	2.60	9.4	0.78
2000	4.69	2.42	9.7	0.81
2500	4.06	2.32	8.9	0.74
3150	3.38	2.07	9.0	0.75
4000	2.74	1.80	9.1	0.76
5000	2.11	1.55	8.1	0.67
6300*	1.57	1.24	7.8	0.65
8000*	1.19	0.99	7.7	0.64
10000*	0.87	0.77	6.4	0.54

* Denotes frequencies outside the range covered by BS EN ISO 354:2003
T1, empty room reverberation time
T2, room reverberation time with sample



v3