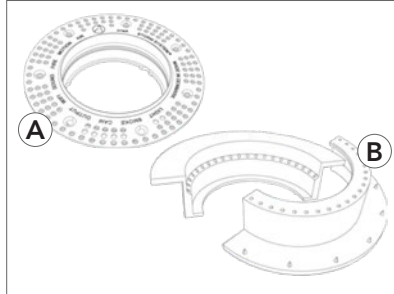


Specific Solutions

STORM MEDIUM ACOUSTIC ADAPTER®

STORM SYSTEM® by ONE A meets every need for a lighting and smart-home technology such as light, speakers, cameras, smoke alarms, and ventilations. The solution compliments minimalistic interiors with Rockfon® Mono® Acoustic ceilings.

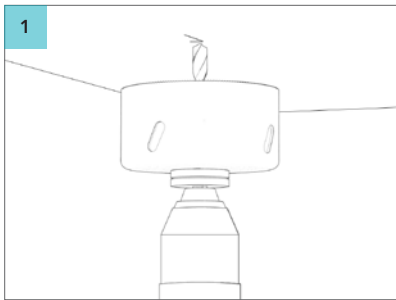
For a seamless installation of STORM SYSTEM® it is required to use STORM MEDIUM ACOUSTIC ADAPTER to be installed with Rockfon Mono Acoustic.



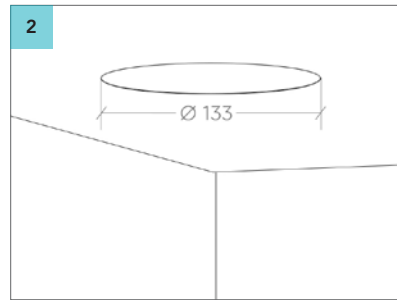
A) Storm Medium Plaster Ring.
B) Storm Medium Acoustic Adaptor.



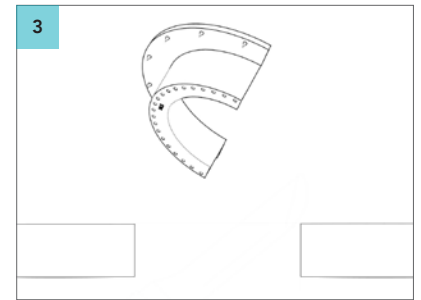
Installed STORM SYSTEM® with flush lighting.



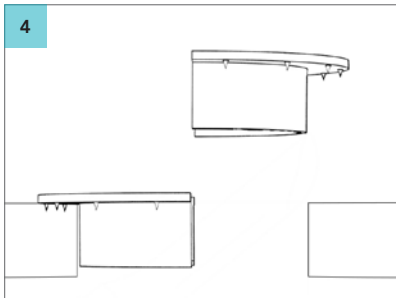
1 Mark the center for the STORM MEDIUM ACOUSTIC ADAPTOR, use a hole saw to cut holes in the Rockfon Mono Acoustic ceiling.



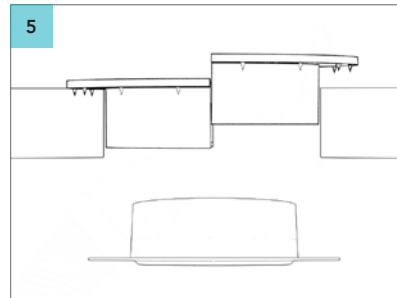
2 Hole diameter DIA 133 mm required. Prepare cables for down light or services.



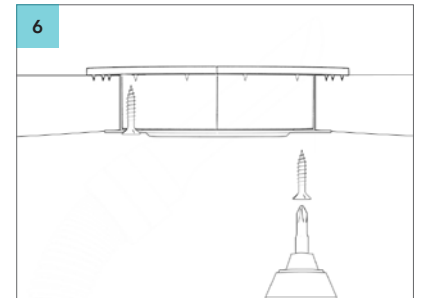
3 Install the first half of the Storm Adaptor (picture 4, 5, 6).



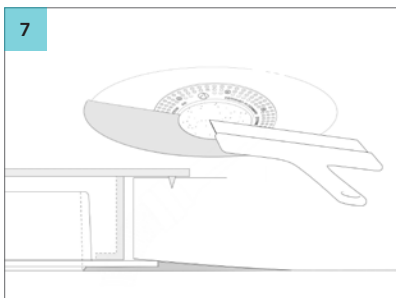
4 Install the second half of Storm Adaptor to the Rockfon Mono Acoustic ceiling.



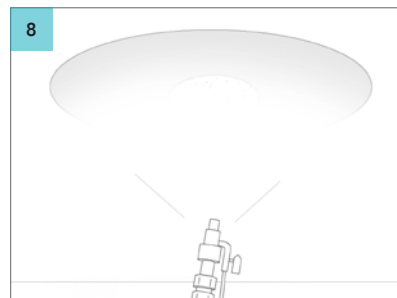
5 Install the Storm Ring to the Storm Adaptor.



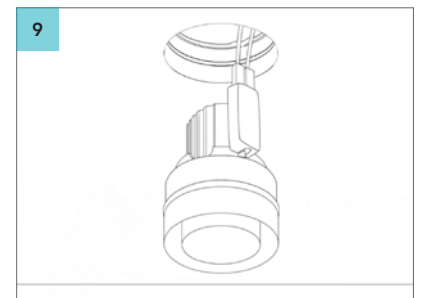
6 Use the screw in the STORM MEDIUM ACOUSTIC ADAPTOR to fix the Storm Ring to Storm Adaptor.



7 Leave the foam cover inside and apply Rockfon Acoustic Filler to do the sanding.



8 Spray Rockfon Mono Acoustic Ready Mix Render or Elegant Render as final finish.



9 Remove the foam cover from Storm Ring and install the down light or other services.