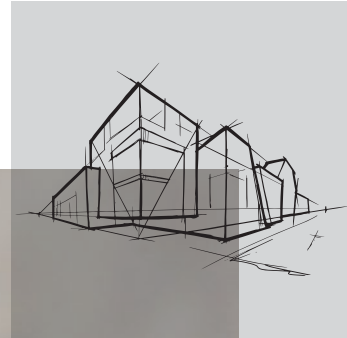


# Chicago Metallic<sup>™</sup> Ultraline T15 3500

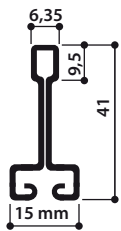
Datasheet



# Chicago Metallic™ Ultraline T15 3500

- Grid with an aesthetic shape and central groove creating a designer ceiling finish
- Grid with a bayonet main runner coupling and 'click' cross tee couplings
- 41 mm main and cross tees with range of accessories
- Special accessories can be adapted on the central groove to hang signages
- Fire rating A1 as per EN 13501-1
- An audible 'click' for fast and accurate installation

## Cross-section



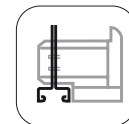
## Compatible tiles

Semi-concealed



## Coupling

Butt-cut end



## Assortment

Product group		Component description	Height (mm)	Length (mm)	Body Material thickness	Colour	Pcs per pack	Lm per pack	Kg per pack
<b>Main runner</b>									
UL MR		Ultraline main runner	41	3600	0.38mm	02	20	72	22.35
UL MR			41	3000	0.38mm	02	20	60	18.95
UL MR			41	3600	0.38mm	8WB	20	72	22.35
UL MR			41	3000	0.38mm	8WB	20	60	18.95
<b>Cross tee</b>									
UL CT		Ultraline cross tee - with 1 slot	41	1200	0.38mm	02	40	48	14.8
UL CT		Ultraline cross tee - w/o miter	41	1200	0.38mm	02	40	48	14.8
UL CT		Ultraline cross tee - with 1 slot	41	1200	0.38mm	8WB	40	48	14.8
UL CT		Ultraline cross tee - w/o miter	41	1200	0.38mm	8WB	40	48	14.8
UL CT		Ultraline cross tee	41	600	0.38mm	02	70	42	12.9
UL CT			41	600	0.38mm	8WB	70	42	12.9
<b>Wall angle options</b>									
L20x14		L Wall angle 20 x 14mm	20	3000	0.4mm	02	40	120	14.78
W22x15x15x15		W Profile 22 x 15 x 15 x 15mm	22	3000	0.4mm	02	40	120	28.5
<b>Accessories</b>									
SH 80		Direct suspension clip. T-profile H 80mm. Max. weight 35 kg	54.6	36			150		3.32
FH B		Hanger. Height 57.5mm. Max weight 35kg	57.5	21.5			200		3.21
UL BOLT M6		Bolt M6x25 for fixation clip T15					100		0.7
UL PSH		Plastic sign hanger for Ultraline®					100		0.1



## Position of slots and suspension holes

Product group	Component description	Height (mm)	Length (mm)	Slots	Distance between slots (mm)
UL MR	Ultraline main runner	41	3600	6	 300 / 600 / 4 x 600 / 300
UL MR		41	3000	5	 300 / 600 / 3 x 600 / 300
UL CT	Ultraline cross tee - with 1 slot	41	1200	1	 600 / 600
UL CT	Ultraline cross tee - w/o miter	41	1200	1	 600 / 600
UL CT	Ultraline cross tee	41	600	0	 600

## Performance



### Load bearing capacity

Hanger distance (mm)	Kg/m <sup>2</sup>
	Maximum deflection
1200	3.3 mm
	12



### Reaction to fire

Non-combustible



### Environment

Fully Recyclable

Rockfon® is a registered trademark  
of the ROCKWOOL Group.

09/2020 | All colour codes mentioned are based on the NCS - Natural Colour System® property of and used on license from NCS Colour AB, Stockholm 2012 or the RAL colour standard. Subject to alterations in range and product technology without prior notice. Rockfon accepts no responsibility for printing errors.

#### **Rockfon Singapore**

ROCKWOOL Building Materials  
(Singapore) Pte Ltd.  
No. 7, Tuas Avenue 1  
Jurong Town,  
Singapore 639492  
Tel: (+65) 6861 4722  
Fax: (+65) 6862 3533  
E-mail: enquiry@rockfon.com  
www.rockfon.asia

#### **Rockfon Hong Kong**

ROCKWOOL Building Materials  
(Hong Kong) Ltd.  
Unit 301-2, 3/F, Koon Wah Building,  
No.2 Yuen Shun Circuit,  
Yuen Chau Kok, Shatin,  
N.T., Hong Kong  
Tel: (+852) 2576-6117  
Mobile: (+852) 9161-7924  
E-mail: enquiry@rockfon.com  
www.rockfon.asia

#### **Rockfon**

ROCKWOOL Middle East FZE  
Office 139, Building 6WB, DAFZA  
P. O. Box 293585, Dubai, UAE  
  
Tel: +971-4-214-6284  
Fax: +971-4 214-6285  
E-mail: rockfonme@rockfon.com  
ae.rockfon.com

#### **Rockfon**

ROCKWOOL France S.A.S.  
111, rue du Château des Rentiers  
75013 Paris  
  
Tel: +33 1 40 77 82 82  
Fax.: +33 1 45 86 77 90  
E-mail: info@rockfon.fr  
www.rockfon.fr

