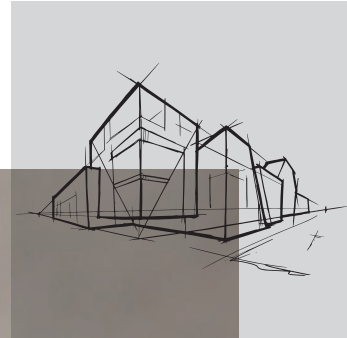


Chicago Metallic[™] T15 4050

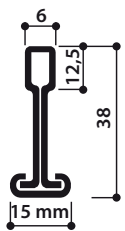
Datasheet



Chicago Metallic™ T15 4050

- 15 mm grid with universal mainrunner and joggled-end cross tees
- 38mm main and cross tees for heavy load bearing and compatibility with accessories.
- A strong and stable grid which can be easily demounted
- Used to create concealed and exposed ceiling solutions
- Fire rating A1 as per EN 13501-1
- An audible 'click' for fast and accurate installation

Cross-section



Compatible tiles









Coupling

Joggled end




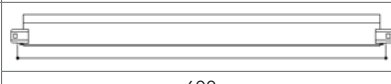
Assortment

Product group		Component description	Height (mm)	Length (mm)	Body Material thickness	Colour	Pcs per pack	Lm per pack	Kg per pack
Main runner									
T15 MR CLICK		Main runner T15 Click	38	3600	0.4mm	02	20	72	30.6
Cross tee									
T15 CT CLICK		Cross tee T15 Click	38	1200	0.4mm	02	60	72	22
T15 CT CLICK			38	600	0.4mm	02	60	36	10
Wall angle options									
L24x14		L Wall angle 24 x 14mm	24	3000	0.4mm	02	40	120	15.6
W20x10x10x14		W Profile 20 x 10 x 10 x 14mm	20	3000	0.4mm	02	40	120	20
Accessories									
FH B		Hanger. Height 57.5mm. Max weight 35kg	57.5	21.5			200		3.21

Products in imperial units (foot and inch) are available upon request.



Position of slots and suspension holes

Product group	Component description	Height (mm)	Length (mm)	Slots	Distance between slots (mm)
T15 MR CLICK	Main runner T15 Click	38	3600	24	 75 / 150 / 22 x 150 / 75
T15 CT CLICK	Cross tee T15 Click	38	1200	1	 600 / 600
T15 CT CLICK		38	600	0	 600

Performance



Load bearing capacity

Hanger distance (mm)	Kg/m ²	
	Maximum deflection	
	3.3 mm	
1200	21	



Reaction to fire
Non-combustible



Environment
Fully Recyclable

Rockfon® is a registered trademark
of the ROCKWOOL Group.

09/2020 | All colour codes mentioned are based on the NCS - Natural Colour System® property of and used on license from NCS Colour AB, Stockholm 2012 or the RAL colour standard. Subject to alterations in range and product technology without prior notice. Rockfon accepts no responsibility for printing errors.

Rockfon Singapore

ROCKWOOL Building Materials
(Singapore) Pte Ltd.
No. 7, Tuas Avenue 1
Jurong Town,
Singapore 639492
Tel: (+65) 6861 4722
Fax: (+65) 6862 3533
E-mail: enquiry@rockfon.com
www.rockfon.asia

Rockfon Hong Kong

ROCKWOOL Building Materials
(Hong Kong) Ltd.
Unit 301-2, 3/F, Koon Wah Building,
No.2 Yuen Shun Circuit,
Yuen Chau Kok, Shatin,
N.T., Hong Kong
Tel: (+852) 2576-6117
Mobile: (+852) 9161-7924
E-mail: enquiry@rockfon.com
www.rockfon.asia

Rockfon

ROCKWOOL Middle East FZE
Office 139, Building 6WB, DAFZA
P. O. Box 293585, Dubai, UAE

Tel: +971-4-214-6284
Fax: +971-4 214-6285
E-mail: rockfonme@rockfon.com
ae.rockfon.com

Rockfon

ROCKWOOL France S.A.S.
111, rue du Château des Rentiers
75013 Paris

Tel: +33 1 40 77 82 82
Fax.: +33 1 45 86 77 90
E-mail: info@rockfon.fr
www.rockfon.fr

